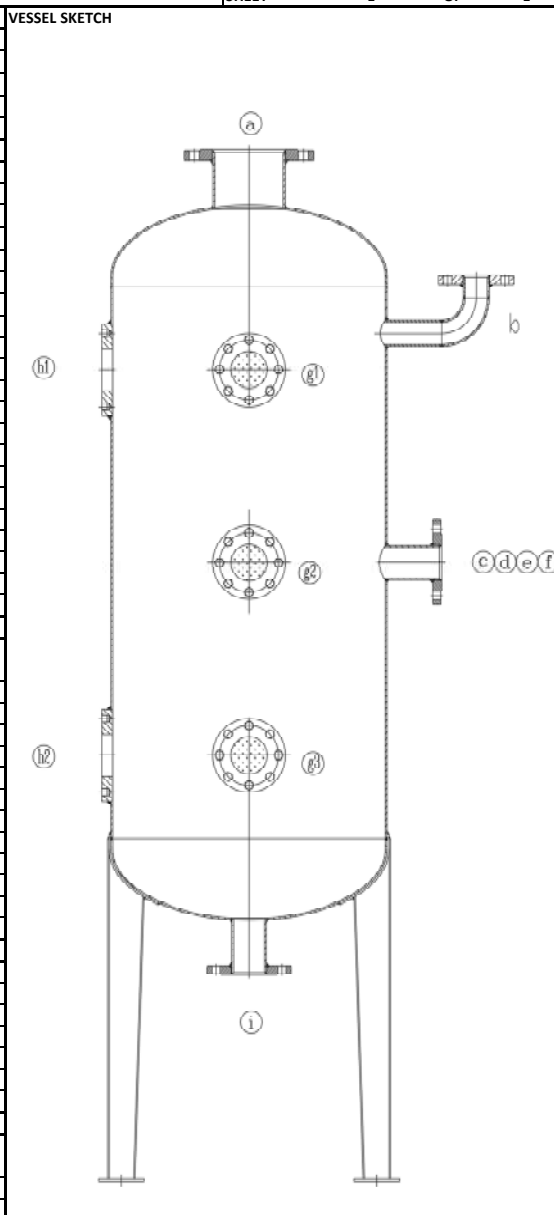


# VERTICAL PRESSURE VESSEL DATA SHEET

MODIFIED STARCH DRYING PROJECT – AGRANA – ROMANIA

REVISION:	DATE:	SPECIFIED BY:	CHECKED BY:	APPROVED BY:	VESSEL TAG NO.:	B6515	JOB NO.:	5204
0	05.05.2026	A.H.	P.S.	A.Z.	VESSEL SERVICE:	AIR HEATER CONDENSATE TANK	DOCUMENT NO.:	5204-ME-DS-B6515-00
					VESSEL QT'Y:	1	P&ID NO.:	5204-PR-DW-0001-03
							SHEET	1 OF 1

PROCESS DATA			
FLUID	Steam Condensate		CONCENTRATION
OPERATING	INT. 8 ~ 11	barg	170 ~ 190 °C
CONDITIONS	EXT.	barg	°C
DENSITY	900	kg/m <sup>3</sup>	VISCOSITY 0.15 mPa.s
SPECIFIC HEAT	4.2	kJ/kg.K	
DESIGN DATA			
DIAMETER	608	mm	T/T HEIGHT 1200 mm
NET CAPACITY		m <sup>3</sup>	
DESIGN	INT. 16	barg	220 °C
CONDITIONS	EXT.	barg	°C
DESIGN VACUUM		kPa	
DESIGN CODE		STAMP	N/A
DESIGN METAL TEMP.	MIN.	°C	MAX. °C
HEADS TYPE	TOP Elliptical	BOTTOM	Elliptical
MIN. RADIOGRAPH		JOINT EFFICIENCY	%
STRESS RELIEVE			
WIND DESIGN			
SEISMIC DESIGN			
EXT. SURFACE PREP.			
PAINT	PRIME		
	INTER.		
	FINISH		
INSULATION	Yes	FIREPROOFING	
APPLICABLE SPEC.			
LETHAL SERVICE		CORROSION ALLOWANCE	mm
PRESSURE TEST TYPE			
MIN. TEST PRESSURE		barg	
MATERIAL SPECIFICATIONS			
ITEM	MATERIAL	UNCORR. THK mm	CORR. ALLOW. mm
HEADS	SS 304L		
SHELL	SS 304L		
SKIRT/SADDLE/LEGS			
BASEPLATE			
NOZZLE NECKS/PIPE			
FLANGES/FORGINGS			
ANCHOR BOLTING			
FLANGE BOLTING			
NOZZLE GASKETS			
GASKET QUANTITY			
POST-WELD HEAT TREATMENT			
PAD PLATE NOZZLE REINFORCEMENT			
EXTERNAL AND INTERNAL ATTACHMENTS REQUIRED			
DEMISTER/VANE SUPPORTS	No	LIFT LUGS/TRUNNIONS	No
FIREPROOFING SUPPORT CLIPS	No	PACKED BED/TRAY SUPPORTS	No
GROUND LUGS	No	PIPE SUPPORT & GUIDE CLIPS	
INSULATION SUPPORTS	Yes	MANWAY DAVIT/HINGE	No
INTERNAL WAVE BREAKER	No	LADDER & PLATFORM CLIPS	
INTERNAL LADDER RUNGS	No	VORTEX BREAKER	
VESSEL INTERNALS			
DESCRIPTION	NO.	TYPE	MATERIAL



NOZZLE SCHEDULE																			
PROCESS NOZZLE DATA												MECHANICAL/INSTRUMENT NOZZLE DATA							
NOZZLE	NO	SIZE	RATING	SERVICE	FACING	NOZZLE	NO	SIZE	RATING	SERVICE	FACING	NOZZLE	NO	SIZE	RATING	SERVICE	FACING		
a	1	150	PN16	Flash Steam Outlet								f	1	65	PN16	Condensate Inlet			
b	1	50	PN16	Safety Valve								g1~3	3	80		Sight Glass			
c	1	65	PN16	Condensate Inlet								h1~2	2	80		Level Transmitter			
d	1	65	PN16	Condensate Inlet								i	1	65		Condensate Outlet			
e	1	65	PN16	Condensate Inlet												Temperature Gauge			
LIQUID LEVELS FROM BOTTOM TANGENT LINE										HOLD-UP TIMES									
HHL				mm	LL				mm	HHL				min.	LL				min.
HL				mm	LLL				mm	HL				min.	LLL				min.
NLL				mm						NLL				min.					

NOTES:

- 
- 
- 
-